



Specialists in high  
quality concrete products

# **FREESTANDING A WALLS**

[www.cwpconcrete.com](http://www.cwpconcrete.com)



**Our A Walls provide a strong and versatile solution for a range of applications.**

They're ideal for waste and recycling facilities, agricultural buildings, storage bays, aggregate bays, flood alleviation works, and are also suitable for grain and silage storage.

| Height (mm) | Width (mm) | Weight (T) |
|-------------|------------|------------|
| 1200        | 2000       | 2.7        |
| 1200        | 3000       | 3.1        |
| 1200        | 3600       | 3.8        |
| 1200        | 4000       | 4.2        |
| Half unit   | 3000       | 1.6        |

**Safe & stable**

Bunkering systems can stand freely up to 3m for free-flowing materials. For walls of 3.6m and 4m, fixing is required to ensure stability. Silage walls up to 3m also need to be fixed, with weep holes included for proper drainage.

**Easy access**

Each unit features a forklift recess, making it simple to move, position, and adjust on site.

**Flexible layouts**

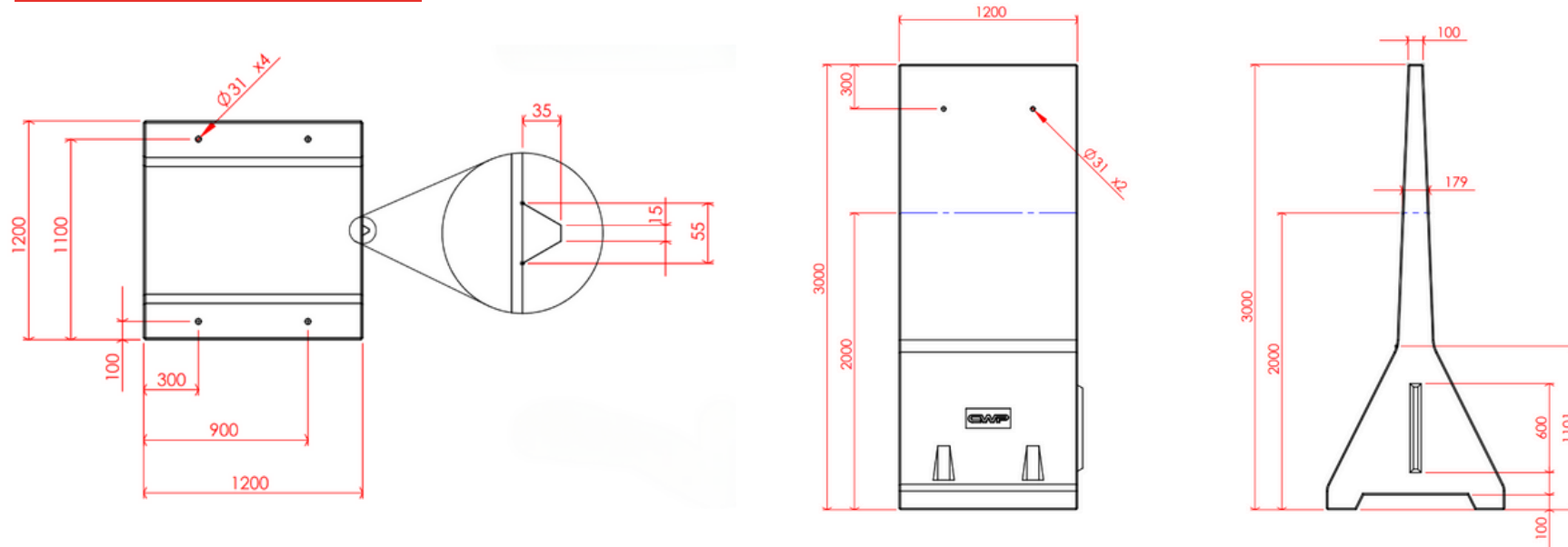
Quadrants or half panels allow walls to be turned through 90 degrees, enabling the creation of square, tank-like structures that fit your space perfectly.

**Optional extras**

We offer lifting brackets, fixing kits, and construction mastic to make installation even easier. Speak to our team for details.



## 2000mm & 3000mm



## 2000mm & 3000mm half unit

